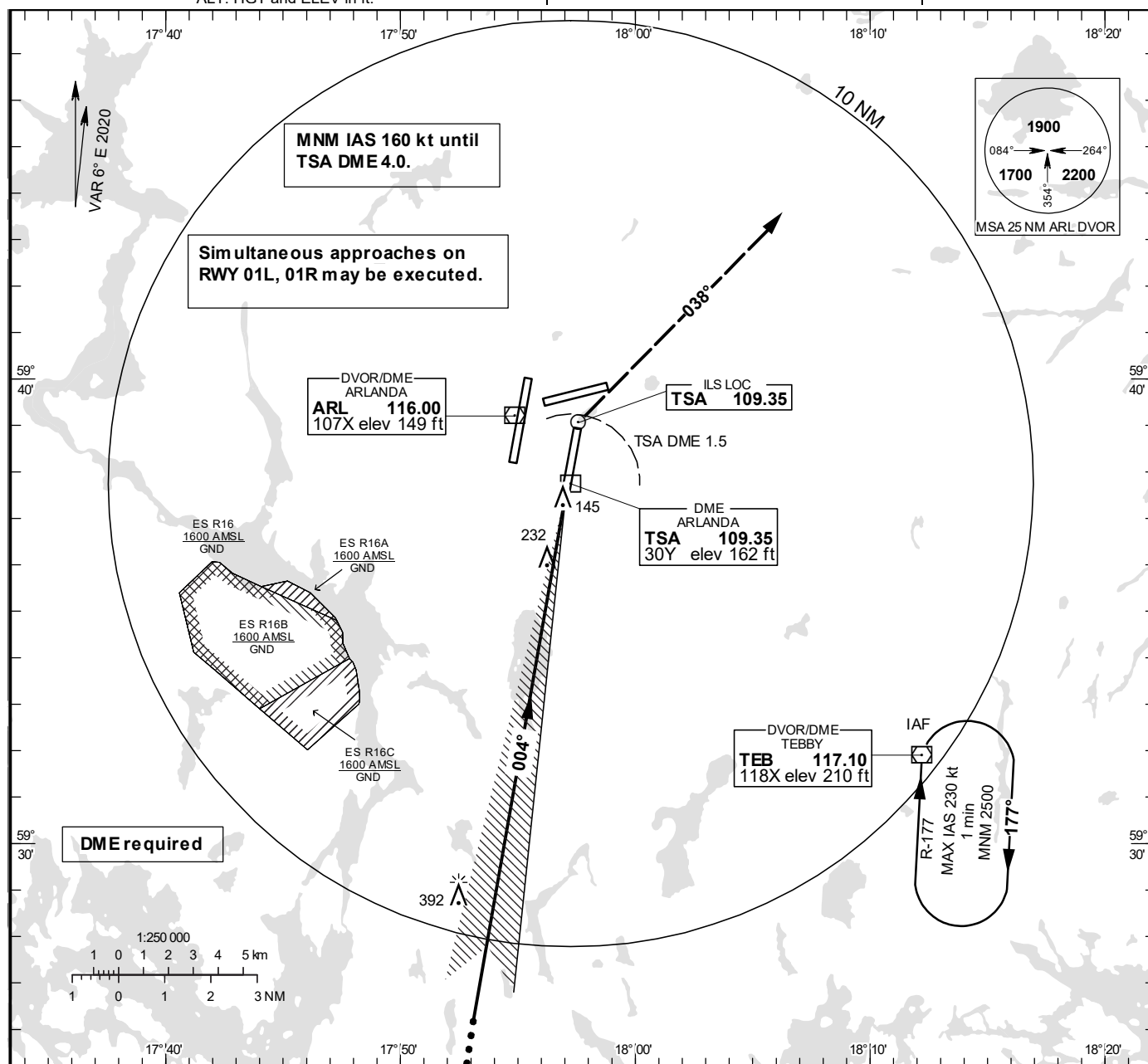


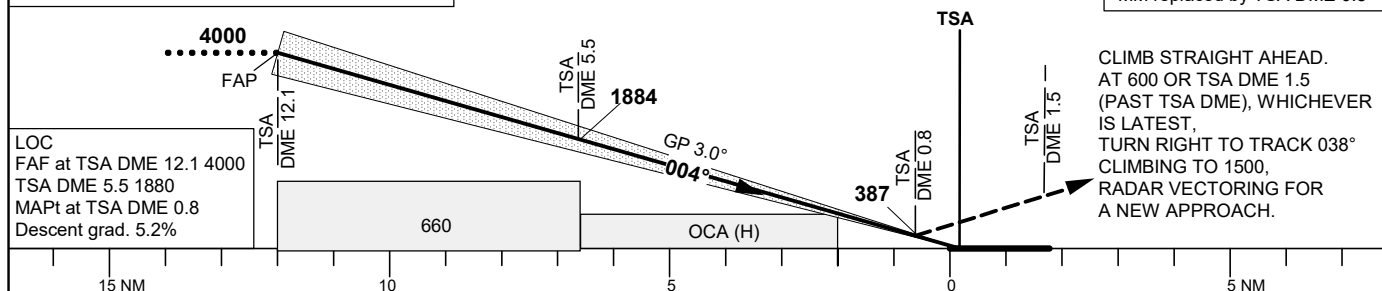
STOCKHOLM/Arlanda
ILS or LOC RWY 01R**INSTRUMENT
APPROACH
CHART – ICAO**

THR ELEV 138.0 ft, AD ELEV 138 ft
OCH are related to THR.
Circling OCH are related to AD ELEV.
BRG are MAG
ALT, HGT and ELEV in ft.

ARLANDA TOWER 125.130/
118.505/128.730
ARLANDA ATIS ARR 119.005
STOCKHOLM APPROACH 123.755

**TA 5000 ft AMSL** RDH 50.9 ft

* Timing not authorized for defining the MAPt

Special Com Failure Procedures see ESSA AD 2.22
Com Failure Chart see AD 2 ESSA 5-7OM replaced by TSA DME 5.5
MM replaced by TSA DME 0.8

OCA (H)						Final approach LOC Distance FAF-MAPt 11.3 NM*					
Cat of ACFT	A	B	C	D	DL	DME TSA NM	11	10	9	8	7
Straight-in Approach	Cat I	285 (147)	298 (160)	309 (171)	320 (182)	322 (184)	Distance	6	5	4	3
	Cat II	193 (55)	219 (81)	233 (95)	244 (106)	245 (107)	ALT	2043	1724	1406	1087
	LOC	490 (350)					GS	kt	80	100	120
	Cat III B Approved						Time	min:s	8:31	6:49	5:40
						Rate of descent	ft/min	425	530	635	745

CHANGE: Editorial